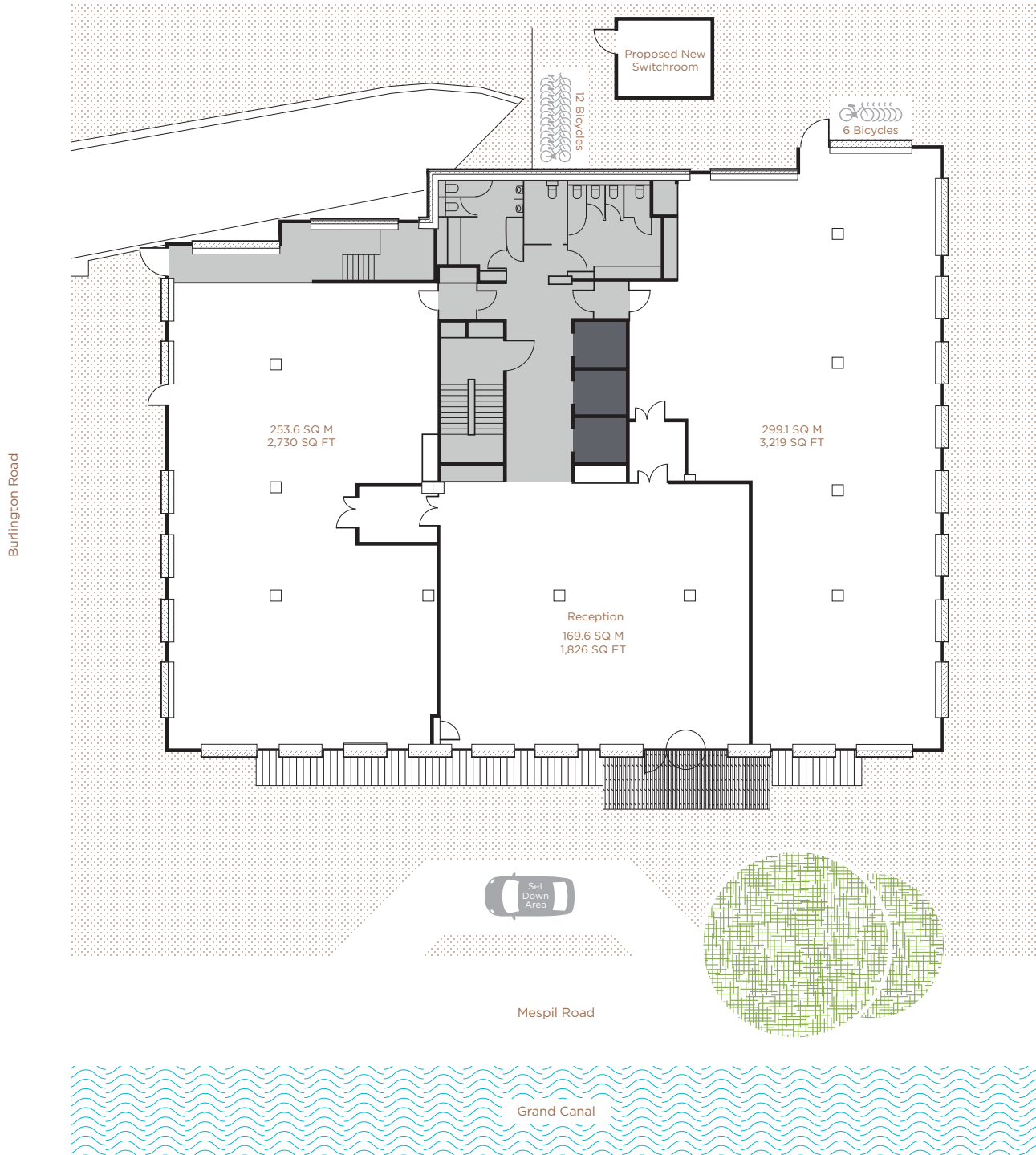


GROUND FLOOR

722.3 SQ M 7,774 SQ FT



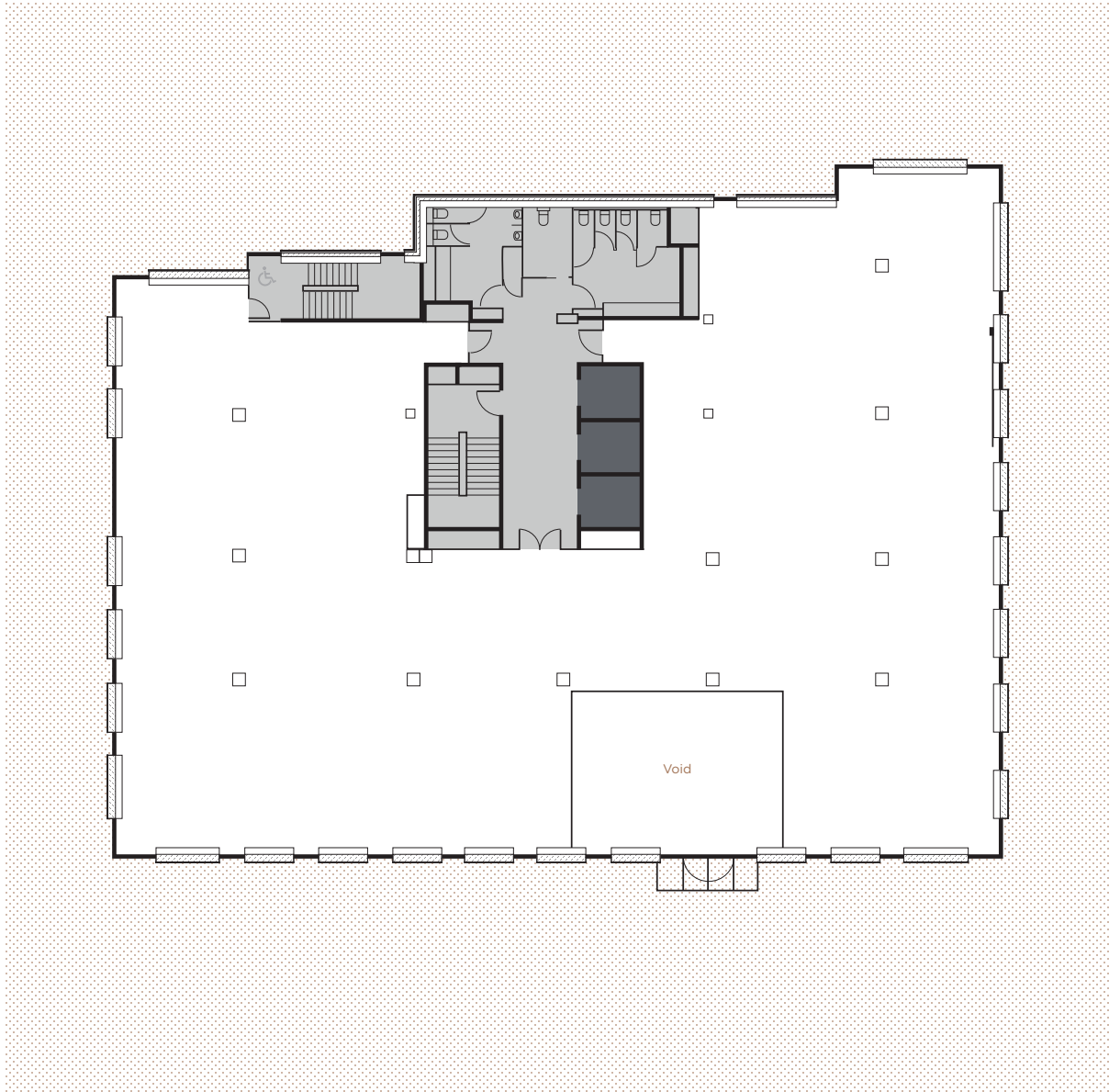
- Lifts
- Core
- Office



FIRST FLOOR

696.6 SQ M 7,498 SQ FT

Burlington Road



Mespil Road



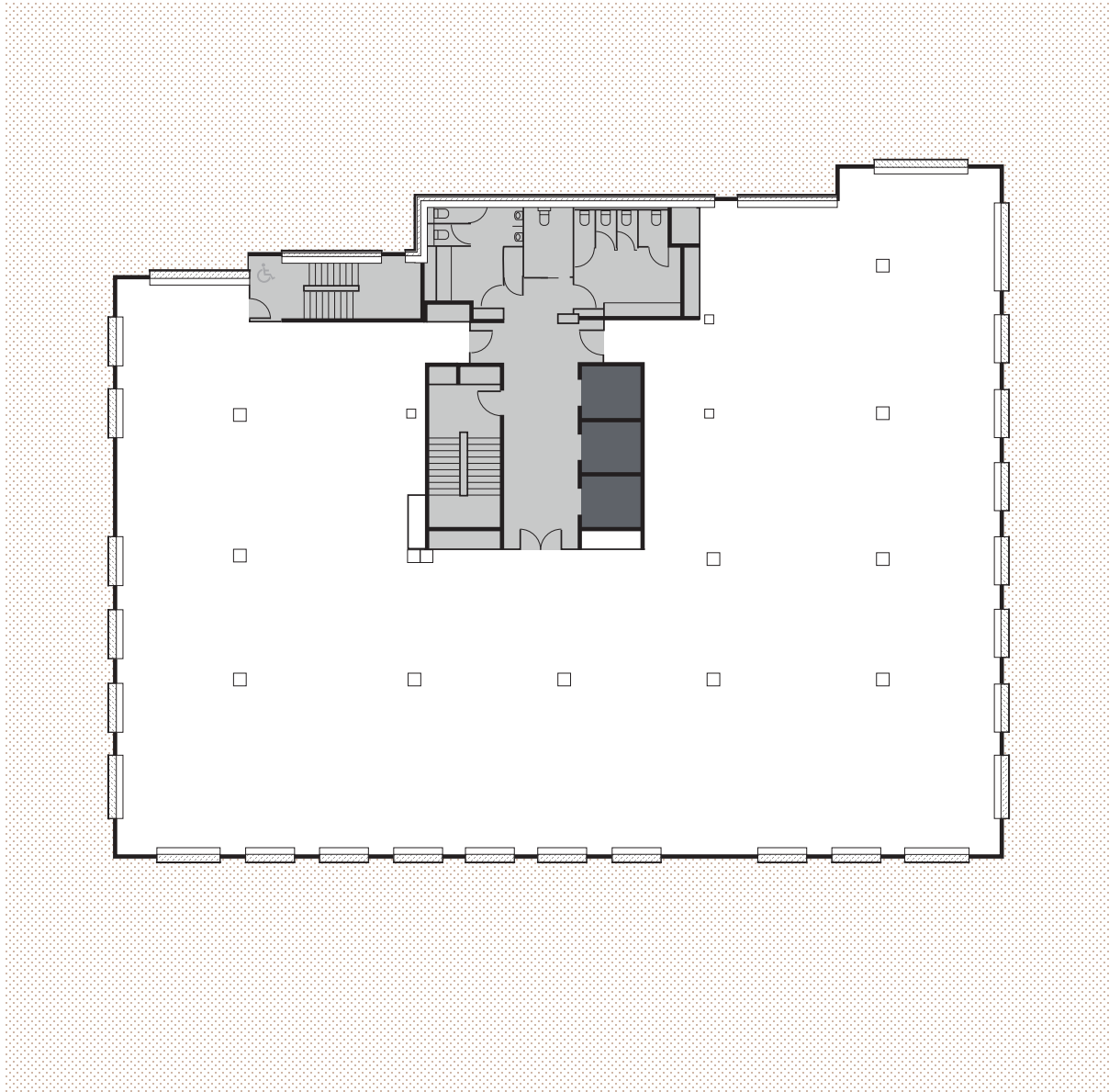
- Lifts
- Core
- Office



SECOND, THIRD & FOURTH FLOORS

749.6 - 753.7 SQ M 8,069 - 8,114 SQ FT

Burlington Road



Mespil Road

Grand Canal

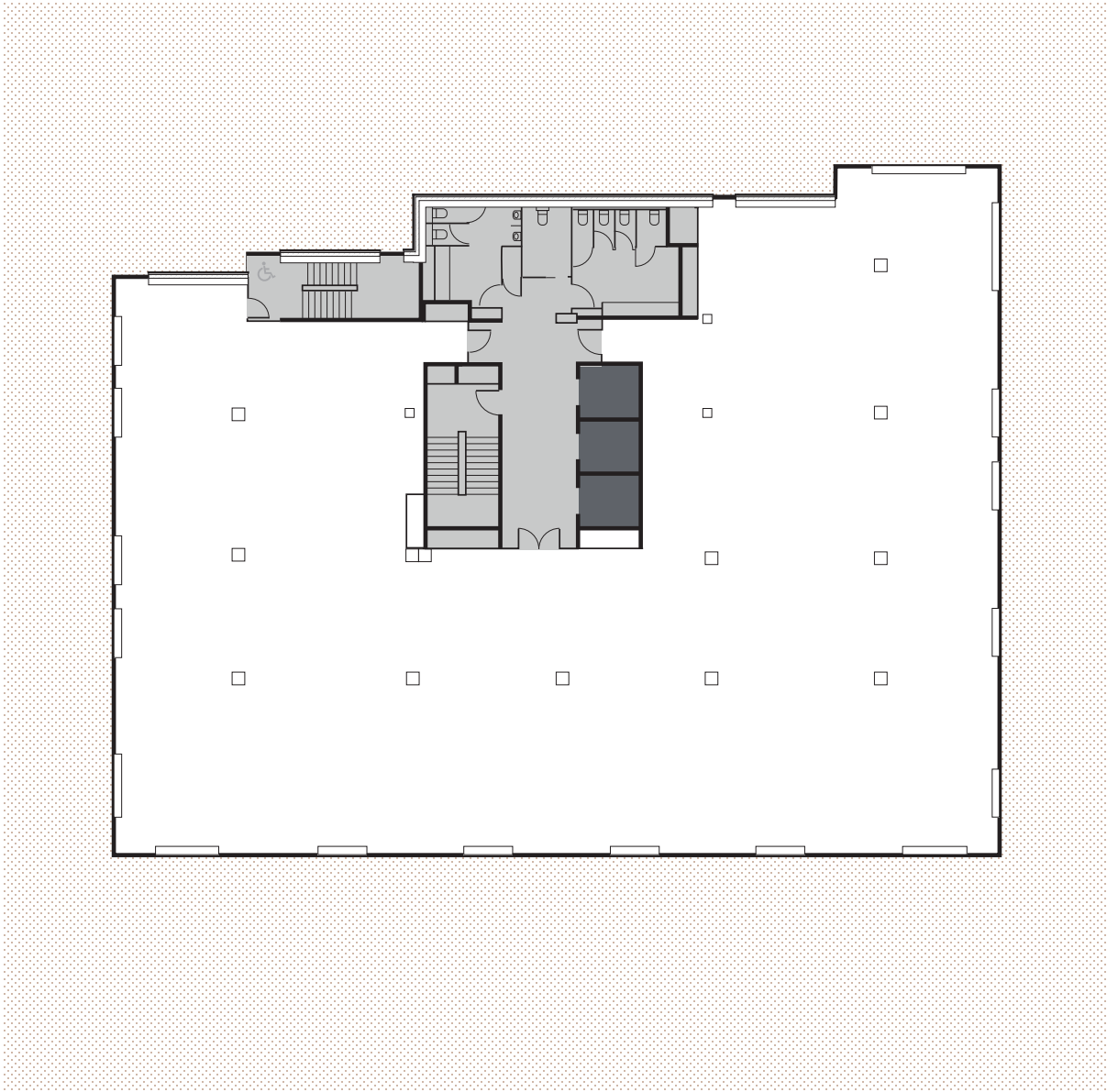
- Lifts
- Core
- Office



FIFTH FLOOR

752.2 SQ M 8,096 SQ FT

Burlington Road



Mespil Road



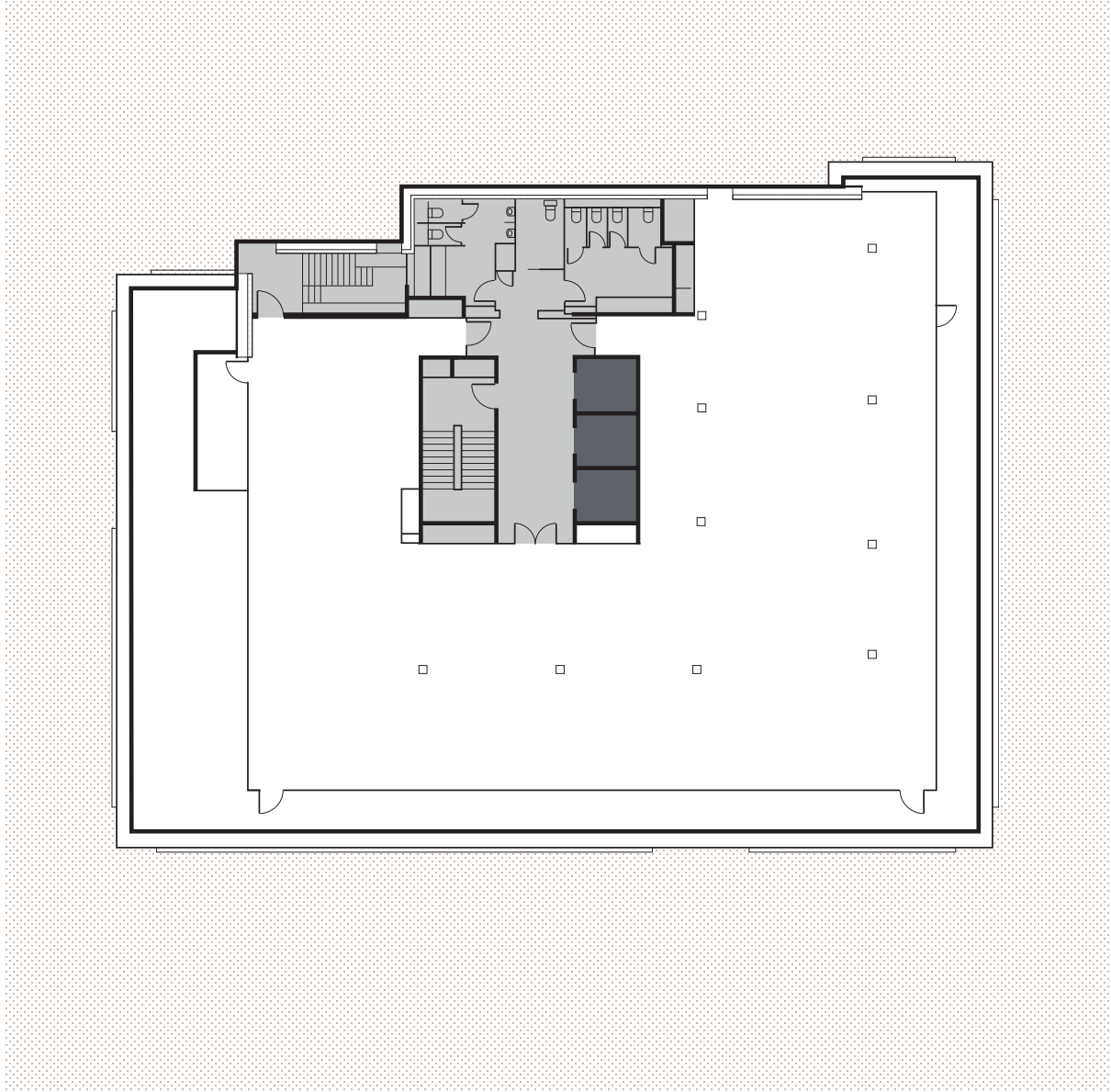
- Lifts
- Core
- Office



SIXTH FLOOR

507.1 SQ M 5,458 SQ FT

Burlington Road



Mespil Road



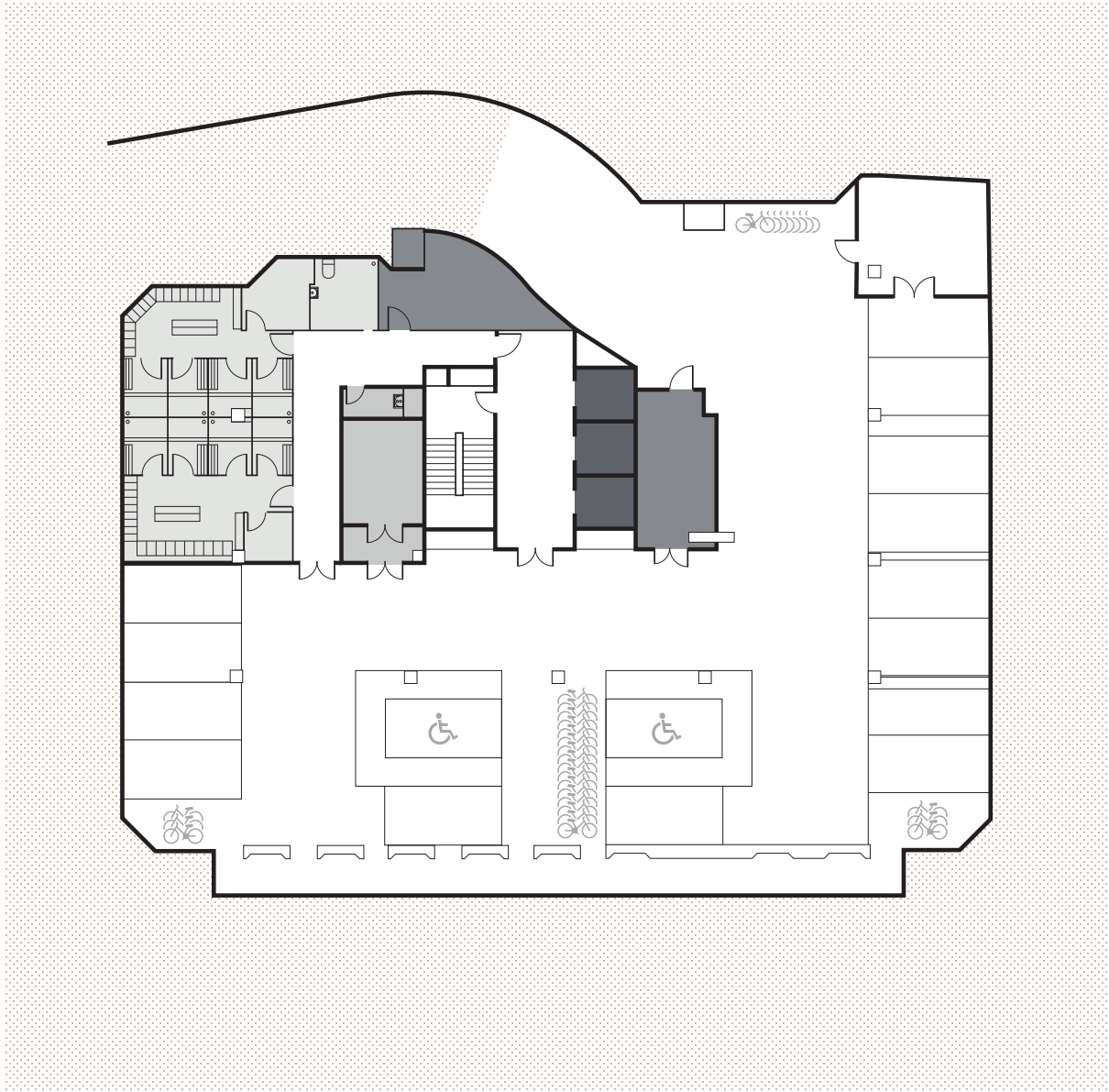
Grand Canal

- Lifts
- Core
- Office



BASEMENT

Burlington Road



Mespil Road



Grand Canal

- Lifts
- Plant
- Bin & Cleaner Stores
- Showers / Toilets / Changing Facilities / Drying Rooms

